



## Paddle Bellows Flow Monitor OEM Version for Liquids



measuring  
•  
monitoring  
•  
analysing

KIT-FPS



- Switching ranges  
0.8...2.2 m<sup>3</sup>/h...  
66.8 ... 200.0 m<sup>3</sup>/h water
- p<sub>max</sub>: 30 bar, t<sub>max</sub>: 120 °C
- Connection: R 1"
- Material:  
brass or stainless steel
- Microswitch 250 V, 16 (8) A
- Any mounting positions

SS



KOBOLD companies worldwide:

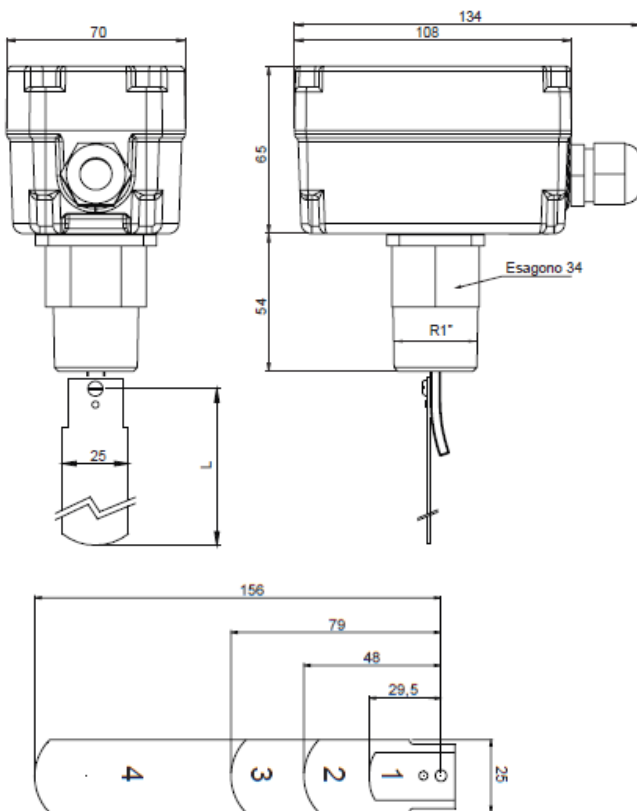
ARGENTINA, AUSTRIA, BELGIUM, BULGARIA, CANADA, CHILE, CHINA, COLOMBIA, CZECHIA, DOMINICAN REPUBLIC, EGYPT, FRANCE, GERMANY, GREAT BRITAIN, HUNGARY, INDIA, INDONESIA, ITALY, MALAYSIA, MEXICO, NETHERLANDS, PERU, POLAND, ROMANIA, SINGAPORE, SOUTH KOREA, SPAIN, SWITZERLAND, TAIWAN, THAILAND, TUNISIA, TURKEY, USA, VIETNAM

KOBOLD Messring GmbH  
Nordring 22-24  
D-65719 Hofheim/Ts.  
Head Office:  
+49(0)6192 299-0  
+49(0)6192 23398  
info.de@kobold.com  
www.kobold.com

**Description**

The KOBOLD flow monitor KIT-FPS operates according to the proven paddle bellows principle. The flowing medium acts on the paddle thus actuating a microswitch. Switching point can be freely adjusted and the device mated to different nominal pipe sizes by means of the replaceable paddle in conjunction with the additional adjustment features. The electrical device section is separated hermetically from the process fluid by means of a bellows. The devices can be installed in any position.

**Dimensions [mm]**



**Technical Details**

Brass design: brass, paddle of st. steel 1.4301  
 Stainless steel design: stainless steel 1.4401, paddle of st. steel 1.4301  
 Max. medium temperature: -40 ... +120 °C  
 Max. ambient temperature: -40 ... +85 °C  
 Max. allowed pressure: brass 15 bar, stainless steel 30 bar  
 Max. pressure loss: approx. 0.01 ... 0.03 bar  
 Inlet and outlet pipe section: 5 times nominal pipe size

**Electrical Details**

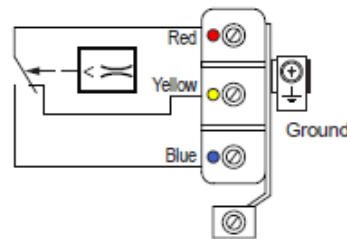
Dust-proof microswitch as single-pole changeover contact  
 Switching voltage: max. 24-250 V<sub>AC</sub>  
 Switching current: max. 8 A (inductive load) max. 16 A (resistive load)  
 Electr. connection: cable gland  
 Case: ABS, white  
 Protection type: IP 65

**Applications**

- Monitoring cooling circuits, lubricant circuits
- Dry running protection for pumps
- Prevention of low water levels

**Electrical connection**

RED-YELLOW closes with falling flow  
 RED-BLUE closes with rising flow



Nominal pipe size	Paddle size	Standard switching range				Order number	
		m <sup>3</sup> /h Water falling <sup>1</sup>		m <sup>3</sup> /h Water rising <sup>2</sup>		Brass	St. steel
		Min	Max	Min	Max		
25	1	1.2	2.3	0.8	2.2	KIT-FPS-OTN OEM VERSION	KIT-FPS-316 OEM VERSION
32	1	1.5	2.8	0.9	2.5		
40	2	2.4	4.3	1.1	3.9		
50	2	3.8	6.5	2.0	6.1		
65	3	4.4	8.4	3.0	7.3		
80	3	6.2	12.6	5.0	11.7		
100	3	8.1	36.0	10.0	30.0		
125	3	24.0	69.0	21.1	51.4		
150	4	20.0	33.7	12.4	29.0		
	3	32.7	90.0	24.0	72.0		
200	4	34.6	96.0	23.9	83.4		
	3	66.8	200	48.4	174		